

WI-HR4128

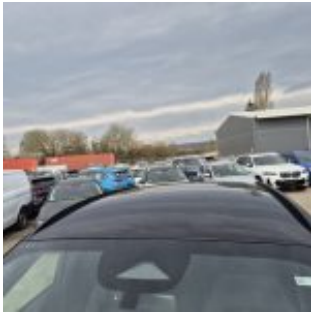
WI-HR4128 · 26 March 2026 · Egingen

Specifications

License Plate Number	WI-HR4128	VIN	WF0FXXWPMFSC63867
Manufacturer	Ford	First Admission	24-10-2025
Model	Kuga	First Registration	24-10-2025
Body Type	SUV	Odometer	17.851 ^{km}
Color	Black	Numer Of Keys	1
Paint Type	Metallic	Interior	Black
Production Year	2025	Number Headrests	5
Fuel Type	Gasoline		

Images





Accessories

ABS

Airbags

Alloy wheels

Audio System

Automatic air conditioning

Bluetooth car kit

Central door locking

Cruise control

Electric rear windows

Electric windows front

Electrically adjustable exterior mirrors

Electrically adjustable front seats

Front & rear parking sensors

Leather steering wheel

Navigation system

Rear view camera

Roller cover / parcel shelf

Roof rails

Seat heating

Steering wheel multifunction

Steeringwheel - Heated

Windscreen - Heated

Xenon lighting

Condition

Condition exterior Good

Condition interior Good

Last Maintenance 24-02-2026

Last maintenance odometer 15.693

Previous Repairs Unknown

Tire Specifications

Tire	Profile	Brand	Width	Aspect Ratio	Radial	Type
Front Left	6 ^{mm}	Goodyear	225 ^{mm}	60 ^{mm}	18 ^{inch}	All Season
Rear Left	7 ^{mm}	Goodyear	225 ^{mm}	60 ^{mm}	18 ^{inch}	All Season
Front Right	6 ^{mm}	Goodyear	225 ^{mm}	60 ^{mm}	18 ^{inch}	All Season
Rear Right	7 ^{mm}	Goodyear	225 ^{mm}	60 ^{mm}	18 ^{inch}	All Season
Spare Tire Type	Compressor					

Damages



Damage Part

Reardoor - Left

Damage Type

Small scratch(es)

Repair Type

Spray

Acceptable

No



Damage Part

Front

Damage Type

Stonechipping

Repair Type

Touch-up / Polish

Acceptable

Yes



Damage Part

Fender - Front Right

Damage Type

Small scratch(es)

Repair Type

Spray

Acceptable

No



Damage Part

Damage Type

Repair Type

Acceptable

Bumper - Rear

Small scratch(es)

Polish

No



Damage Part

Damage Type

Repair Type

Acceptable

Tailgate

Dent(s) & Scratch(es)

Panelbeating & Spray

No



Damage Part

Damage Type

Repair Type

Acceptable

Interior

Stains & dirt

Cleaning

No