

2-GDK-511

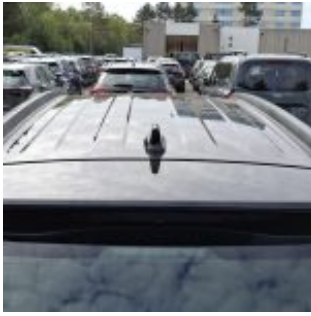
2-GDK-511 · 1.8 Hybrid Safety Pack DYNAMIC 1.8 140PS AT · 8 May 2026 · Zaventem (BE)

Specifications

License Plate Number	2-GDK-511	VIN	JTNADADB50J024200
Manufacturer	TOYOTA	Cylinder Capacity	1.798 ^{cm³}
Model	Corolla	Transmission Type	Automatisch geschakelde Transmissie
Model Versions	1.8 Hybrid Safety Pack DYNAMIC 1.8 140PS AT	First Admission	05-11-2024
Body Type	5 door hatchback	Odometer	50.308 ^{Km}
Color	Black	Numer Of Keys	2
Paint Type	Metallic	Interior	Grey
Production Year	2024	Number Headrests	5
Fuel Type	Hybrid Gasoline		

Images





Accessories

ABS

Airbags

Alloy wheels

Audio System

Automatic air conditioning

Bluetooth car kit

Central door locking

Centre armrest

Cruise control

Electric rear windows

Electric windows front

Electrically adjustable exterior mirrors

Fog lights

Front & rear parking sensors

Leather steering wheel

Navigation system

Rear view camera

Steering wheel multifunction

Condition

Condition exterior

Adequate

Condition interior

Adequate

Last Maintenance Unknown

Maintenance Remarks Olieverversen

Previous Repairs

Unknown

Tire Specifications

Tire	Profile	Brand	Width	Aspect Ratio	Radial	Type
Front Left	5 ^{mm}	Uniroyal	215 ^{mm}	60 ^{mm}	17 ^{inch}	All Season
Rear Left	7 ^{mm}	Uniroyal	215 ^{mm}	60 ^{mm}	17 ^{inch}	All Season
Front Right	5 ^{mm}	Uniroyal	215 ^{mm}	60 ^{mm}	17 ^{inch}	All Season
Rear Right	7 ^{mm}	Uniroyal	215 ^{mm}	60 ^{mm}	17 ^{inch}	All Season
Spare Tire Type	Homecomer					

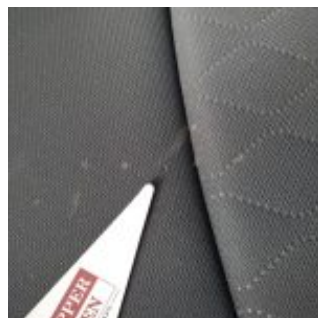
Damages



Damage Part	Damage Type	Repair Type	Acceptable
Trunkshelf	Missing	Replace	No



Damage Part	Damage Type	Repair Type	Acceptable
Tailgate	Damaged	Touch-up	No



Damage Part	Damage Type	Repair Type	Acceptable
Drivers seat	Burned	Cloth Repair	No



Damage Part
Frontdoor - Left

Damage Type
Small dent(s)

Notes
Binnenzijde

Repair Type
Cloth Repair

Acceptable
No



Damage Part
Rear seat

Damage Type
Stains & dirt

Repair Type
Cleaning

Acceptable
No



Damage Part
Reardoor - Left

Damage Type
small dents / small scratches

Repair Type
Panelbeating & Spray

Acceptable
No

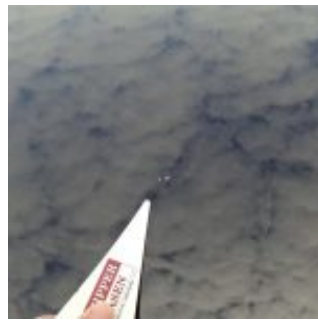


Damage Part
Frontdoor - Left

Damage Type
small dents / small scratches

Repair Type
Panelbeating & Spray

Acceptable
No



Damage Part
Hood

Damage Type
Stonechipping

Repair Type
Acceptable

Acceptable
Yes



Damage Part
Windscreen - Front

Damage Type
Broken

Repair Type
Replace

Acceptable
No