

2-FGV-200

2-FGV-200 · Move! Full link 1,0L TSI 110HP DSG KJ72RZ E06 · 7 May 2026 · Zaventem (BE)

Specifications

| | | | |
|----------------------|---|-------------------|-------------------------------------|
| License Plate Number | 2-FGV-200 | Fuel Type | Gasoline |
| Manufacturer | SEAT | VIN | VSSZZZKJ2RR122566 |
| Model | Arona | Cylinder Capacity | 999 ^{cm³} |
| Model Versions | Move! Full link 1,0L TSI 110HP DSG KJ72RZ E06 | Transmission Type | Automatisch geschakelde Transmissie |
| Body Type | 5 door hatchback | First Admission | 06-05-2024 |
| Color | Black | Odometer | 73.446 ^{Km} |
| Paint Type | Metallic | Numer Of Keys | 2 |
| Production Year | 2024 | Interior | Grey |
| KW | 85 | Number Headrests | 5 |

Images





Accessories

ABS

Airbags

Alloy wheels

Audio System

Automatic air conditioning

Bluetooth car kit

Central door locking

Centre armrest

Cruise control

Electric rear windows

Electric windows front

Electrically adjustable exterior mirrors

Leather steering wheel

Rear parking sensors

Seat heating

Steering wheel multifunction

Condition

Condition exterior

Adequate

Maintenance

Bandenspanning controleren

Remarks

Olieerversen over 13700 km

Condition interior

Adequate

Previous Repairs

Unknown

Last Maintenance Unknown

Tire Specifications

| Tire | Profile | Brand | Width | Aspect Ratio | Radial | Type |
|-----------------|-----------------|----------|-------------------|------------------|--------------------|--------|
| Front Left | 2 ^{mm} | Goodyear | 205 ^{mm} | 55 ^{mm} | 17 ^{inch} | Summer |
| Rear Left | 4 ^{mm} | Goodyear | 205 ^{mm} | 55 ^{mm} | 17 ^{inch} | Summer |
| Front Right | 2 ^{mm} | Goodyear | 205 ^{mm} | 55 ^{mm} | 17 ^{inch} | Summer |
| Rear Right | 4 ^{mm} | Goodyear | 205 ^{mm} | 55 ^{mm} | 17 ^{inch} | Summer |
| Spare Tire Type | Compressor | | | | | |

Damages



Damage Part
Fender - Rear Left



Damage Type
Scratch(es)

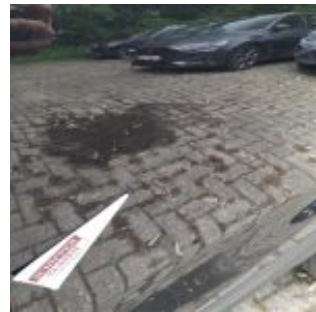


Repair Type
Spray

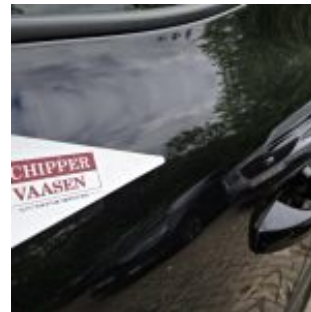
Acceptable
No



Damage Part
Reardoor - Left



Damage Type
Scratch(es)



Repair Type
Spray

Acceptable
No



Damage Part
Frontdoor - Left



Damage Type
Scratch(es)



Repair Type
Spray

Acceptable
No





Damage Part
Fender - Front Left

Damage Type
Scratch(es)

Repair Type
Spray

Acceptable
No



Damage Part
Trunkshelf

Damage Type
Missing

Repair Type
Replace

Acceptable
No