

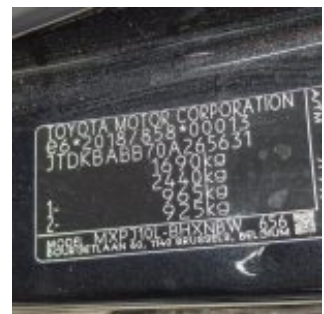
2-ENX-160

2-ENX-160 · 1.5 HEV 2WD Dynamic 1.5 116PS AT · 8 May 2026 · Zaventem (BE)

Specifications

License Plate Number	2-ENX-160	VIN	JTDKBABB70A265631
Manufacturer	TOYOTA	Cylinder Capacity	1.500 ^{cm³}
Model	Yaris Cross	Transmission Type	Automatisch geschakelde Transmissie
Model Versions	1.5 HEV 2WD Dynamic 1.5 116PS AT	First Admission	05-12-2023
Body Type	5 door hatchback	Odometer	81.348 ^{Km}
Color	Black	Numer Of Keys	2
Paint Type	Metallic	Interior	Grey
Production Year	2023	Number Headrests	5
Fuel Type	Hybrid Gasoline		

Images





Accessories

ABS

Airbags

Audio System

Automatic air conditioning

Bluetooth car kit

Central door locking

Centre armrest

Cruise control

Electric rear windows

Electric windows front

Electrically adjustable exterior mirrors

Fog lights

Leather steering wheel

Rear view camera

Roller cover / parcel shelf

Steering wheel multifunction

Condition

Condition exterior Adequate

Condition interior Adequate

Last Maintenance 28-04-2026

Last maintenance odometer 80.513

Previous Repairs Unknown

Tire Specifications

Tire	Profile	Brand	Width	Aspect Ratio	Radial	Type
Front Left	5 ^{mm}	Falken	205 ^{mm}	65 ^{mm}	16 ^{inch}	All Season
Rear Left	5 ^{mm}	Falken	205 ^{mm}	65 ^{mm}	16 ^{inch}	All Season
Front Right	5 ^{mm}	Falken	205 ^{mm}	65 ^{mm}	16 ^{inch}	All Season
Rear Right	5 ^{mm}	Falken	205 ^{mm}	65 ^{mm}	16 ^{inch}	All Season
Spare Tire Type	Compressor					

Damages



Damage Part

Damage Type

Repair Type

Acceptable

Fender - Front Right

Small dent(s)

Restyle

No



Damage Part

Damage Type

Repair Type

Acceptable

Frontdoor - Right

Scratch(es)

Spray

No



Damage Part

Damage Type

Repair Type

Acceptable

Skirt - Right

Scratch(es)

Plastic Repair

No



Damage Part

Damage Type

Repair Type

Acceptable

Reardoor - Right

small dents / small scratches

Panelbeating & Spray

No



Damage Part

Damage Type

Repair Type

Acceptable

Overfender

Scratch(es)

Replace

No



Damage Part

Damage Type

Repair Type

Acceptable

spoiler RB

Scratch(es)

Plastic Repair

No



Damage Part	Damage Type	Repair Type	Acceptable
Bumper - Rear	Scratch(es)	Spray	No



Damage Part	Damage Type	Repair Type	Acceptable
Reardoor - Left	Scratch(es)	Spray	No



Damage Part	Damage Type	Repair Type	Acceptable
Frontdoor - Left	Small dent(s)	Panelbeating & Spray	No

