

## 2-EHL-200

2-EHL-200 · 1.5 HEV 2WD Dynamic · 7 May 2026 · Zaventem (BE)

### Specifications

License Plate Number	2-EHL-200	Fuel Type	Hybrid Gasoline
Manufacturer	TOYOTA	VIN	JTDKBABB70A268982
Model	Yaris Cross	Cylinder Capacity	1.490 <sup>cm<sup>3</sup></sup>
Model Versions	1.5 HEV 2WD Dynamic	Transmission Type	Automatisch geschakelde Transmissie
Body Type	5 door hatchback	First Admission	12-10-2023
Color	Grey	Odometer	54.876 <sup>Km</sup>
Paint Type	Metallic	Numer Of Keys	2
Production Year	2023	Interior	Grey
KW	68	Number Headrests	5





## Accessories

ABS

Airbags

Audio System

Automatic air conditioning

Bluetooth car kit

Central door locking

Centre armrest

Cruise control

Electric rear windows

Electric windows front

Electrically adjustable exterior mirrors

Fog lights

Leather steering wheel

Rear view camera

Roller cover / parcel shelf

Steering wheel multifunction

## Condition

Condition exterior Adequate

Condition interior Adequate

Smoked in the car

Last Maintenance Unknown

Previous Repairs

Unknown

## Tire Specifications

Tire	Profile	Brand	Width	Aspect Ratio	Radial	Type
Front Left	4 <sup>mm</sup>	Falken	205 <sup>mm</sup>	65 <sup>mm</sup>	16 <sup>inch</sup>	All Season
Rear Left	6 <sup>mm</sup>	Falken	205 <sup>mm</sup>	65 <sup>mm</sup>	16 <sup>inch</sup>	All Season
Front Right	4 <sup>mm</sup>	Falken	205 <sup>mm</sup>	65 <sup>mm</sup>	16 <sup>inch</sup>	All Season
Rear Right	6 <sup>mm</sup>	Falken	205 <sup>mm</sup>	65 <sup>mm</sup>	16 <sup>inch</sup>	All Season
Spare Tire Type	None					

## Damages



Damage Part

Damage Type

Repair Type

Acceptable

Frontdoor - Right

Scratch(es)

Spray

No



Damage Part

Damage Type

Repair Type

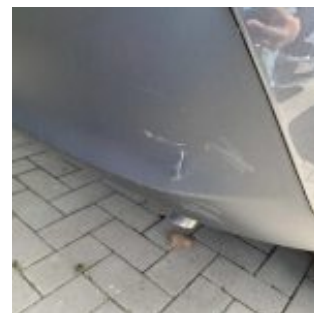
Acceptable

Reardoor - Right

Scratch(es)

Spray

No



Damage Part

Damage Type

Repair Type

Acceptable

spoiler RB

Scratch(es)

Plastic Repair

No



Damage Part

Damage Type

Repair Type

Acceptable

Tailgate

Scratch(es)

Spray

No



Damage Part

Damage Type

Repair Type

Acceptable

Bumper - Rear

Scratch(es)

Spray

No



Damage Part

Damage Type

Repair Type

Acceptable

Reardoor - Left

Scratch(es)

Spray

No



Damage Part	Damage Type	Repair Type	Acceptable
Frontdoor - Left	small dents / small scratches	Panelbeating & Spray	No



Damage Part	Damage Type	Repair Type	Acceptable
Wheelcover - Left Front	Damaged	Replace	No



Damage Part	Damage Type	Repair Type	Acceptable
Bumper - Front	Scratch(es)	Spray	No



Damage Part	Damage Type	Repair Type	Acceptable
Wheelcover - Right Front	Damaged	Replace	No



Damage Part

Damage Type

Repair Type

Acceptable

Overfender

Scratch(es)

Replace

No